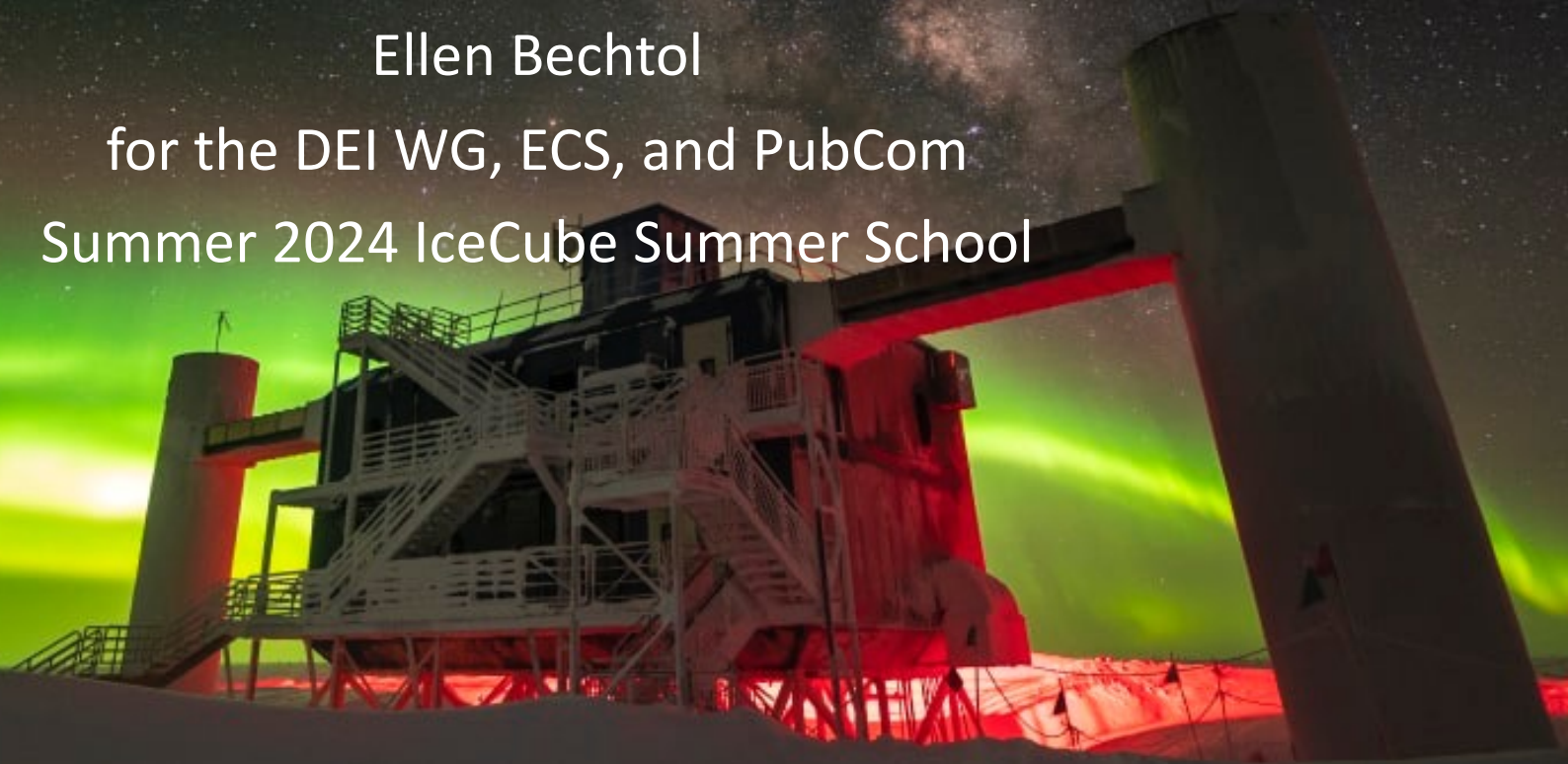


IceCube DEI WG + ECS + PubCom

Ellen Bechtol

for the DEI WG, ECS, and PubCom

Summer 2024 IceCube Summer School



WISCONSIN
UNIVERSITY OF WISCONSIN-MADISON

Martin Wolf, IceCube/NSF

Roadmap

1. Diversity Equity and Inclusion WG
2. Early Career Scientists (ECS)
3. Publications Committee (PubCom)

Diversity, Equity, and Inclusion Working Group

Diversity, Equity, and Inclusion WG

The Diversity, Equity, and Inclusion Working Group (DEI WG) exists to uphold the guidelines and forward the goals outlined in the [IceCube Diversity Statement](#).

The WG was created to recognize the cultural and intellectual richness of the IceCube community and to advance inclusion and equity in and beyond our community.

What We Do

- Organize Collaboration Meeting activities and meet-ups
- Host regular calls to further learning and discussion on topics of interest
- Run mentoring program
- Increase inclusion and belonging within the Collaboration
- One point of contact for DEIA-issues that come up
- Celebrate days and months-of-recognition
- Point of contact for collaboration and information sharing with other multimessenger groups

New Call Format!

- Topic-focused calls relevant to the collaboration
- Have an idea? Want to present? Read a relevant paper recently?
Reach out to Ellen or on #diversity!
 - Coming up on July 11: Jessie Thwaites will present on making accessible materials.

Accessibility Resources

Jessie Thwaites

On the [DEI Google drive](#), and now has its own wiki page:

https://wiki.icecube.wisc.edu/index.php/Making_Accessible_Materials

Outline:

- Why make accessible content?
- Visual accessibility
 - Templates and general guidelines
 - Fonts
 - Color in text or plots
- Making visuals accessible to people who are blind and visually impaired
 - Making an accessible pdf
 - Accessibility checkers
 - Alt text
- LaTeX accessibility packages
- Summary & References

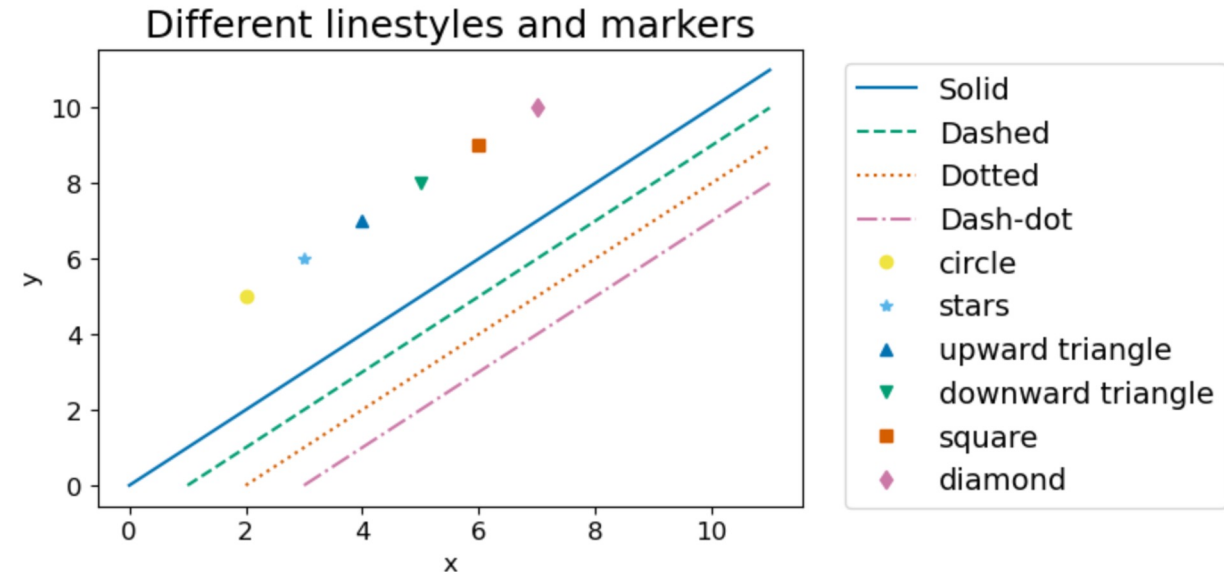


Figure: One of the best ways to make plots more accessible for colorblindness is to choose different linestyles or markers on your plots.

Want to get involved? Contribute to the wiki page or examples on GitHub

Edits and suggestions welcome!

Networking & Mentoring Program

Program Goals

1. To provide a supportive and welcoming environment for junior members of the IceCube Collaboration.
 2. To foster meaningful and sustainable mentoring relationships.
 3. Share resources and advice on professional development and personal growth opportunities
- More is info available in [this document outlining the need and basic idea](#).
 - Open to graduate students and postdoctoral scholars.
 - Applications will come out in August.



ICECUBE

navigation

- [Main page](#)
- [Recent changes](#)
- [Random page](#)
- [Help about MediaWiki](#)

search

tools

- [What links here](#)
- [Related changes](#)
- [Special pages](#)
- [Printable version](#)
- [Permanent link](#)
- [Page information](#)

[main page](#)[discussion](#)[view source](#)[history](#)[log in](#)

Main Page

Welcome to the [IceCube wiki](#). Are you unable to create an account or log in? If you do not have an LDAP login for IceCube (what you would use to log in to pub), please have your institution lead e-mail help@icecube.wisc.edu and request that we create an account for you.

Collaboration resources

[IceCube's Code of Conduct](#)[IceCube's Ombudspeople](#)[IceCube's Formal Complaint Policy](#)

Analysis resources

[IceCube Analysis overview](#)
[Plots for public release](#)

IceCube Detector

[IceCube Live](#)
[South Pole](#)
[Problem DOMs](#)

Documentation

[Introductory Material to IceCube](#)
[Monitoring Reference Guide](#)
[Experiment Control](#)
[Software](#)

Data & Simulation

[Computing Services](#)
[Simulation Production](#)

Working @ 222

[The Office](#)
[The Building](#)

Useful links

[Communications, Education and Outreach](#)
[People](#)
[How to Create a Microsoft Account for Sharepoint Access](#)
[Internal Website](#)

Software & Computing

[New User Welcome Letter](#)
[Analysis software at UW/IceCube](#)
[Analysis Storage](#)

Diversity & Inclusion

[IceCube Diversity Statement](#)
[Diversity Resources](#)
[IceCube Diversity, Equity, and Inclusion Working Group](#)

Boards, Committees & Meetings

[Publications Committee](#) (paper drafts)
[Speakers Committee](#) (conference talks)
[IceCube Impact Award](#)
[IceCube Collaboration Board](#)

[Coordination Committee](#) (calls) (Task Vacancy List)
[IceCube Technical Call](#) (calls)
[TFT Board](#)
[Simulation Panel](#)

[IceCube call](#) (docushare)
[Analysis call](#) (docushare)

Get Involved!

Bi-weekly call schedule:

Thursday 6/13 @ 11am CDT

Wednesday 6/26 @8am CDT

Thursday 7/11 @ 11am CDT

Wednesday 7/24 @ 8:00am CDT, etc...

Join the DEI WG on Slack at ***#diversity***

or

email diversity@icecube.wisc.edu or ebechtol@icecube.wisc.edu

Early Career Scientists

Welcome to ECS!

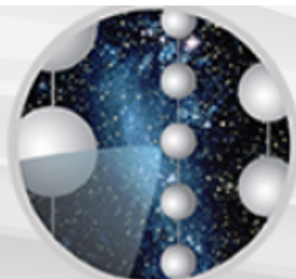
- Welcome!
 - ECS members are any young, or young at heart, members who don't have permanent positions*
- 2 elected representatives on the IceCube Board (ICB), with one collective vote
 - For reference: your institutional lead (IL) votes at ICB with a vote weighted as vN where N is the # of PhD's at the institution
- Find us if you have questions or concerns!
- Our wiki page: https://wiki.icecube.wisc.edu/index.php/Early_Career_Scientists
- New user welcome information <https://wiki.icecube.wisc.edu/index.php/Newbies>

*Official definition in governance document: see next slide

Appendix B: IceCube Early Career Scientist Elections

From the governance document:

Definition of IceCube EC Scientist: An Early Career scientist is a member of the IceCube collaboration who has received their Ph. D. within 7 years of the most recent past January 1st, but who has not received an assistant professor or tenured position; or who is a graduate student who has been on the author list for two years.



ICECUBE

navigation

- [Main page](#)
- [Recent changes](#)
- [Random page](#)
- [Help about MediaWiki](#)

search

tools

- [What links here](#)
- [Related changes](#)
- [Upload file](#)
- [Special pages](#)
- [Printable version](#)
- [Permanent link](#)
- [Page information](#)

[page](#)[discussion](#)[edit](#)[history](#)[move](#)[unwatch](#)

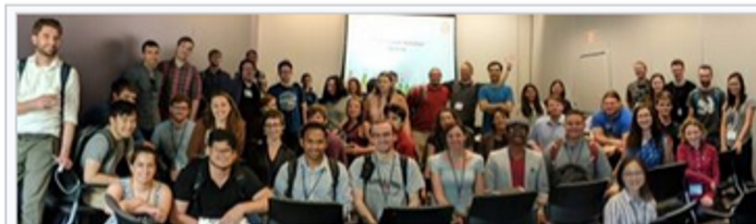
Early Career Scientists

https://wiki.icecube.wisc.edu/index.php/Early_Career_Scientists

This page collects and summarizes the activities and information of the Early Career scientists (ECS) within IceCube.

In principle, an **Early Career Scientist (ECS)** is a member of the IceCube collaboration **who does not hold a permanent position yet**. Any young, or young at heart, members, who does not hold a permanent position yet, are naturally of the ECS community. However, to be eligible to vote in an ECS activity, such as an ECS representative election, one is required to meet one of the following criteria:

- has received their Ph. D. within 7 years of the most recent past January 1st, but who has not received an assistant professor or tenured position
- is a graduate student who has been on the author list for two years



ECS Meeting at the Collaboration Meeting in Atlanta '18



Contents [hide]

- 1 [ECS representatives](#)
 - 1.1 [Current Representatives](#)
 - 1.2 [Past Representatives](#)
- 2 [Where to find us and other useful tips](#)
- 3 [Material](#)
 - 3.1 [Newsletters](#)
 - 3.2 [Meeting Materials](#)
- 4 [Background information](#)

Join us on slack ([#ecs](#))!

Add junior members in your group!

Housekeeping

- Reminder to check if you are on the **author list**!
- If you have a PhD, add your **PhD year** to your personal data
Also, consider getting an **ORCID** and add it to your personal data
(<https://user-management.icecube.aq/>)

Early Career Scientist Representatives



Shiqi Yu (2024-2026)

- Assistant research professor (3yr contract, non-tenure-track), U of Utah
- PhD on experiment at Fermi Accelerator National Lab, IceCube member since 2020
- Work: co-lead of reconstruction WG



Lisa Schumacher (2023-2025)

- Postdoc at ECAP, FAU-Erlangen
- PhD on IceCube, IceCube member since 2015
- Work: co-lead of neutrino-sources WG

Publications Committee

Publications by the numbers

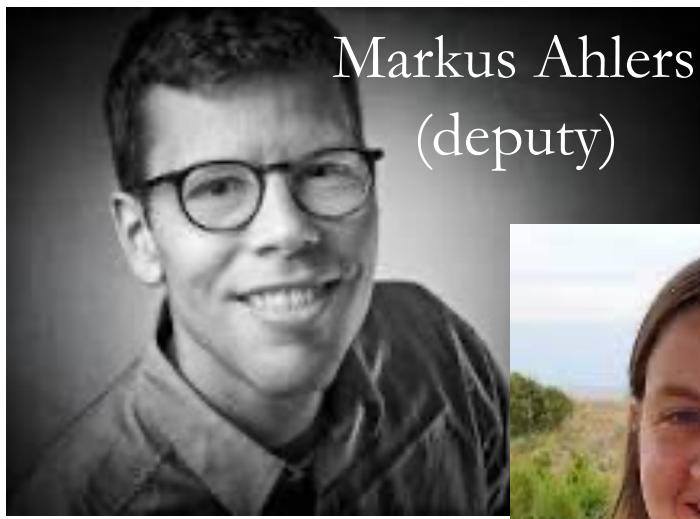
About **20** publications submitted per year

Average time from first draft sent to PubCom until submission:

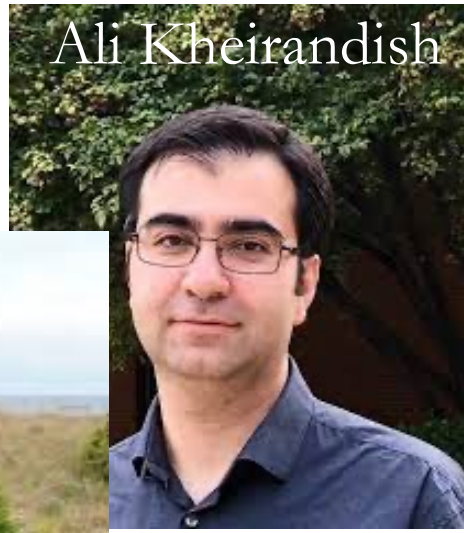
3-4 months

60 collaborators per year are officially involved in reviewing papers

10 people on PubCom – we help guide you through the process!



Markus Ahlers
(deputy)



Ali Kheirandish



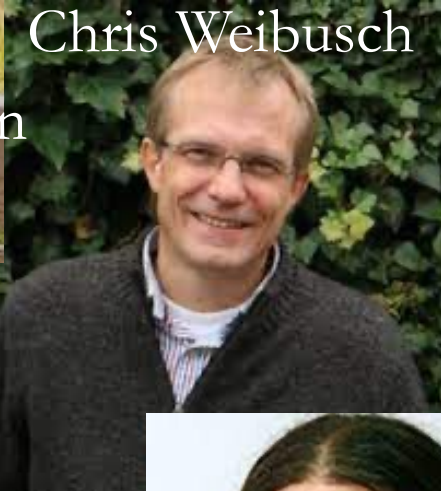
Jenni Adams



Shigeru Yoshida



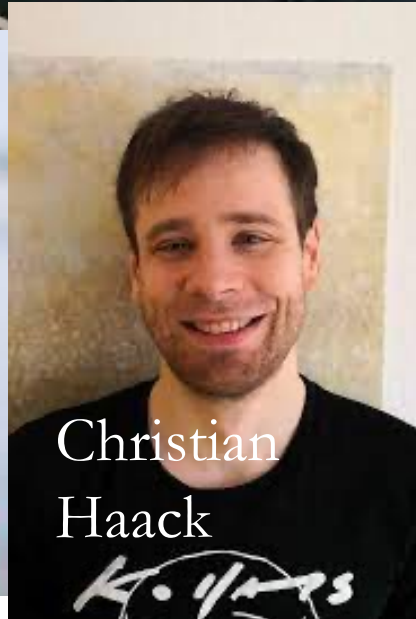
Erin O'Sullivan
(chair)



Chris Weibusch



Justin
Vandenbroucke



Christian
Haack



Markus
Ackermann
(ex-officio
Gen2)

IceCube Summer School 2024



Anna Franckowiak

6/4/24

Anatoli Fedynitch



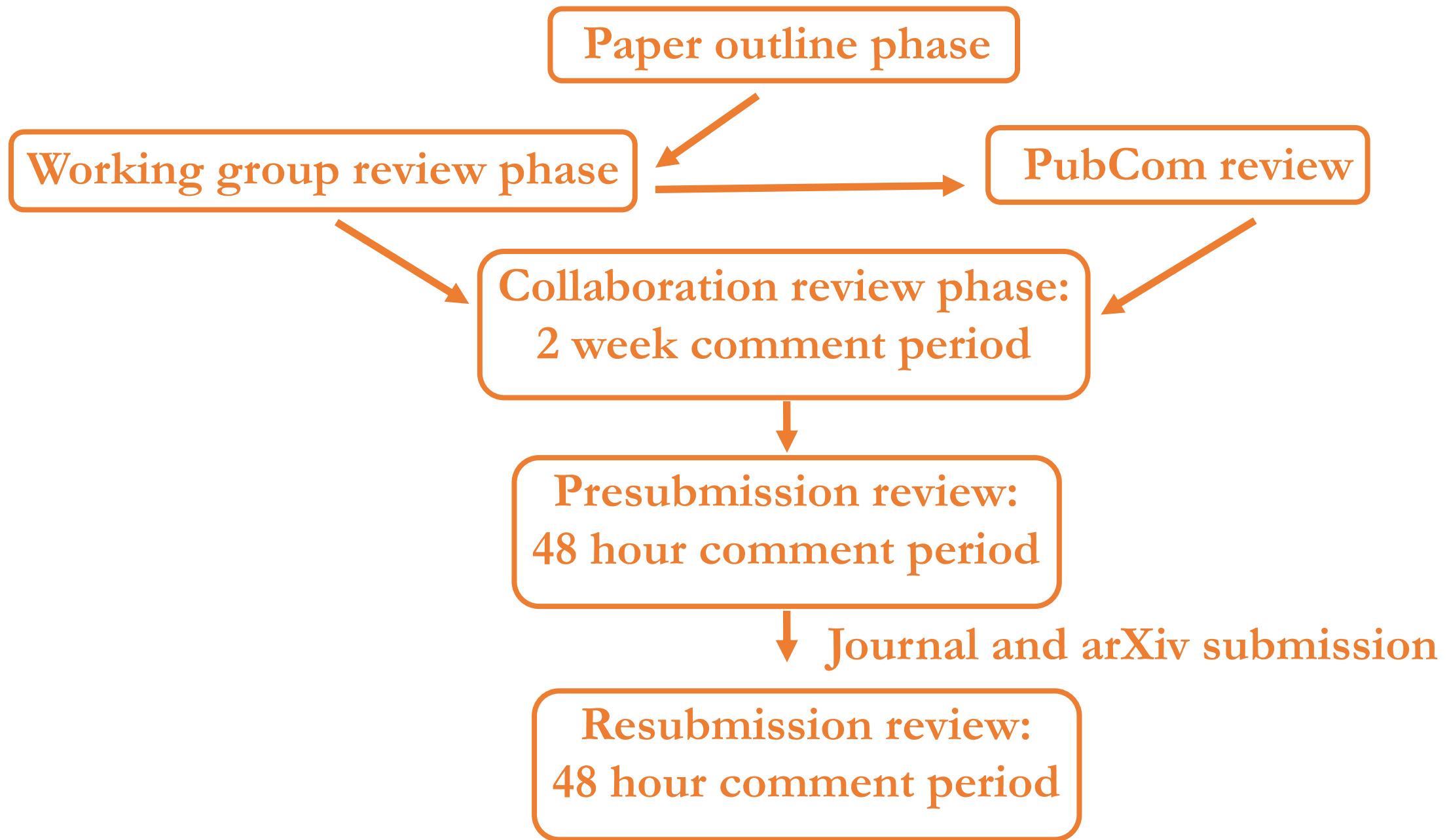


Publication checklist

Go here if you are wondering:

- What are the steps for publishing an IceCube paper?
- Who is responsible for doing what?

This is your step-by-step guide!



Paper reviewer guidelines

Go [here](#) if you are wondering:

- What questions should I be asking as a reviewer on a paper review committee?
- What questions should I be asking as a collaborator that should also be reading papers?
- What is an appropriate level of review for each review stage?

Paper reviewer guidelines

Working group review: 6 questions
Are the main building blocks in place?

PubCom review: 7 questions
Is the work well described?

Collaboration reviewer: 4 questions
High level, fresh perspective

Presubmission review: 2 questions
Typos and author list check

What are internal reports?

Summary of work that is more informal than a paper

Now possible to make the title, author list, and abstract publically visible.

Why would I want to do this?

- Report on work that might not be published.
- You want to give these reports to employers or list them on a CV.

Internal Report Collection

[Add Authors](#) [Browse Authors](#) [Browse Dates](#) [F.A.Q.](#) [Submit Report](#) [AMANDA Reports](#) [Home](#)

Quick Search: [Advanced Search](#)

2023 Reports

You are logged in as: eosullivan [logout]

Browse by Year: [2006](#) [2007](#) [2008](#) [2009](#) [2010](#) [2011](#) [2012](#) [2013](#) [2014](#) [2015](#) [2016](#) [2017](#) [2018](#) [2019](#) [2020](#) [2021](#) [2022](#) [2023](#) [2024](#)

Report Number ▼ Author Title

icecube/202311002	Rogan Clark	DM-Ice17: New calibration and DAQ operations beginning in the year 2022
icecube/202311001	Matthias Thiesmeyer	Application of an Evolutionary Algorithm for the Binning Optimization of the Likelihood Analysis of Astrophysical Muon Neutrinos with IceCube
icecube/202310001	Shuyang Deng	Twelve Years Observation of Seasonal Variations of the Atmospheric Neutrino Flux with IceCube
icecube/202306002	Tianlu Yuan	MuonGun studies on the CNN nu-tau analysis
icecube/202306001	Andreas Noell	Construction, Characterization, and Optimization of IceAct Imaging Air Cherenkov Telescopes
icecube/202301001 6/4/24	Bennett Brinson	How to Best Identify Flaring Sources: Alert-triggered Follow-up or Untriggered All-sky Analysis?

IceCube Summer School 2024

[Internal reports website](#),
has full access to reports
- is internal only

Publications

Text search:

To search for an exact phrase, enclose term in quotation marks.

Start date: 31/12/2022

End date: 15/03/2024

- Type:
- ☐ Journal Article
 - ☐ Conference Proceeding
 - ☐ Thesis
 - ☐ Other
 - ☒ Internal Report

[public publications page](#) the title, authors, and abstract of internal reports that requested to be public listed

Publications

Search returned 1 results

Publications per Page: 20

DM-Ice17: New calibration and DAQ operations beginning in the year 2022
Rogan Clark, Antonia Hubbard, Teppei Katori, Matt Kauer, and Katherine Rawlins
(internal) icecube/202311002
Abstract: [Show](#)

What we would like new collaborators to know

We are here to help your paper be the best it can be

We are here to help you navigate the publication process

Review takes time, but time spent in IceCube review = time saved in journal review (and a better paper)

Thanks for Listening!

